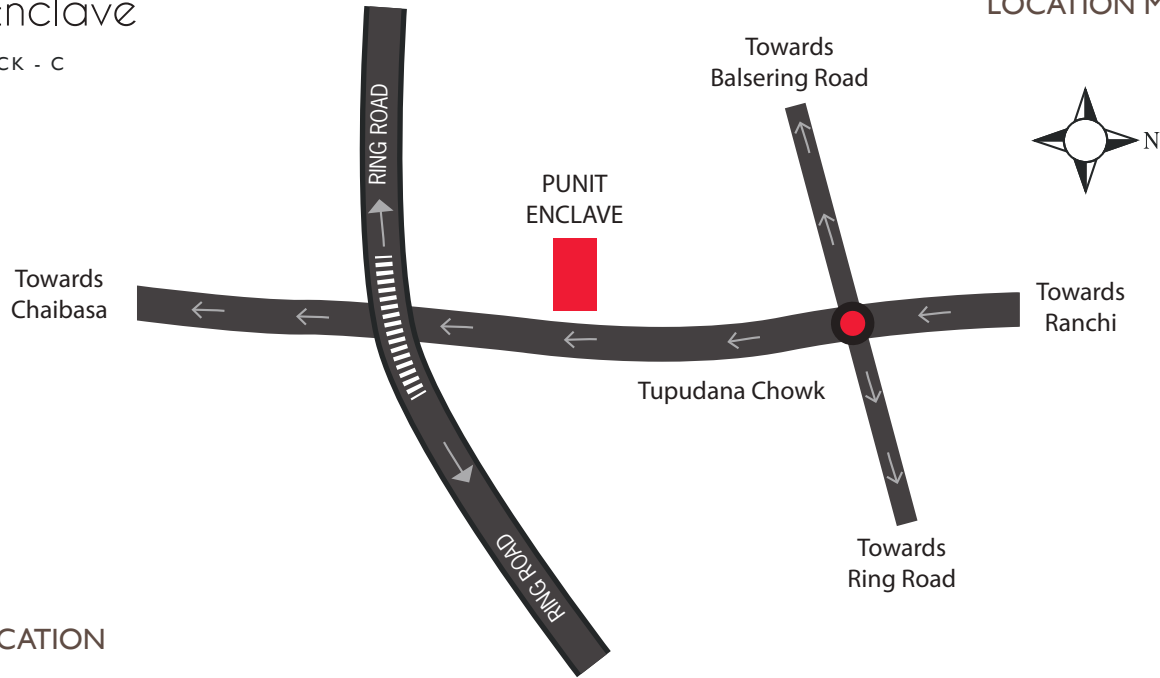


Punit Enclave

BLOCK - C

Tupudana, Ranchi



SPECIFICATION

Structure :

R.C.C. coulmn/beams slabs.

Walls

8”/6”/4” thick external & 3”/4” thick internal partition walls. All internal walls and ceiling will have plaster of Paris finish with a coat of cement primer and dry distemper over it.

Floors

Vitrified/Ceramic floor tiles in whole flat (Except Toilets) (Make size and quality as per discretion of the builder)

Doors

Wooden frame with flush/panel type shutters of wood. Ultra locking in main door and cylindrical lock in all bedrooms and toilet doors.

Windows

Three track sliding aluminium windows with two track glazed and one track mosquito net provision.

Water Arrangement

Connection from deep tube well to overhead tank connected with electric pump.

Toilets

Flooring in ceramic tiles and dado in white ceramic tiles upto chowkhat height. (Geysers not provided)

Sanitary Fittings

All C.P. or brass fittings of standard make. White glazed vitreous sanitaryware, cistern of white acrylic fibre glass. Hot and Cold provision in basin at Dining area with basin mixture.

Kitchen

All C.P. or brass fittings of standard make. Hot and cold provision.

Electricals

Concealed copper wiring with standard make modular fittings and fixtures.

Fan regulators, provision for AC point and T.V. & Telephone point in Drawing Room and all Bedrooms and intercom facility shall be provided (A.C., Fan, Tubelights not provided)

Parking

Floor Chequred Tiles.



SILENT FEATURES

1. Peaceful Location.
2. 24 hrs. water supply from own tubewell through overhead tank lifted by pump
3. Generator facility with limited electric supply to flats and to be used for running electric water pump and lift.
4. Concealed telephones lines.
5. Black/Maroon Granite in Kitchen platform.
6. Main Door with Teak/Laminate finishing on external face.
7. Ultra lock in main door.
8. Intercom facilities.



FLAT DETAILS

Flat No. _____

Flat Floor _____

Flat Direction _____

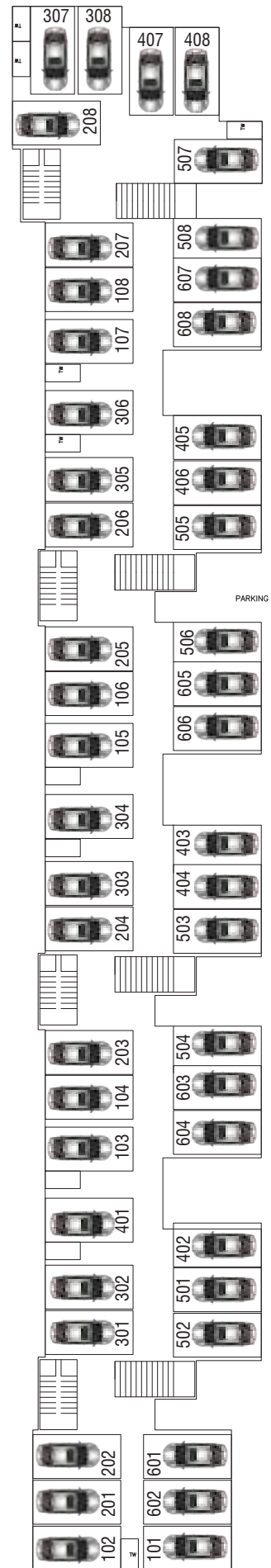
Flat Value _____

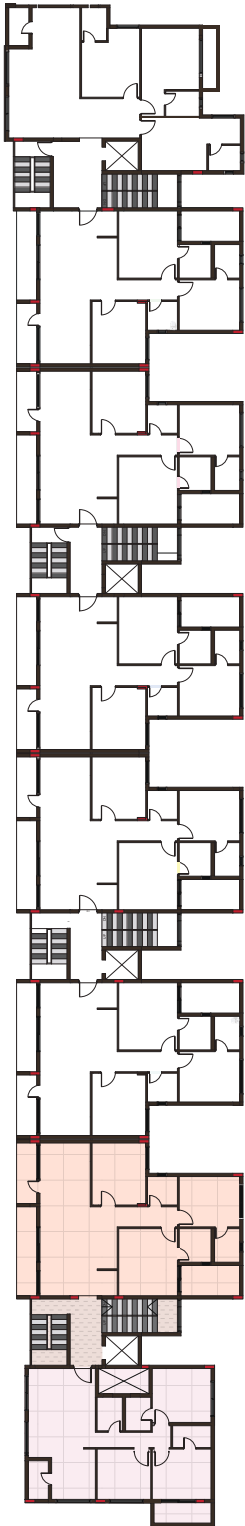
Rates valid one week from _____

MODE OF PAYMENT

Initial Booking	Rs. 5,00,000/-
At the time of foundation	21%
At the time of 2nd slab casting	21%
At the time of 4th slab casting	21%
After Plaster before POP	21%
15 days before possession	Balance

PARKING PLAN

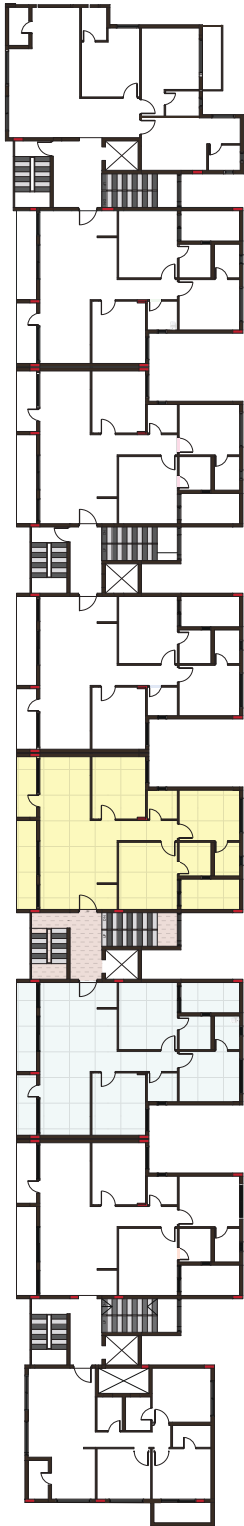




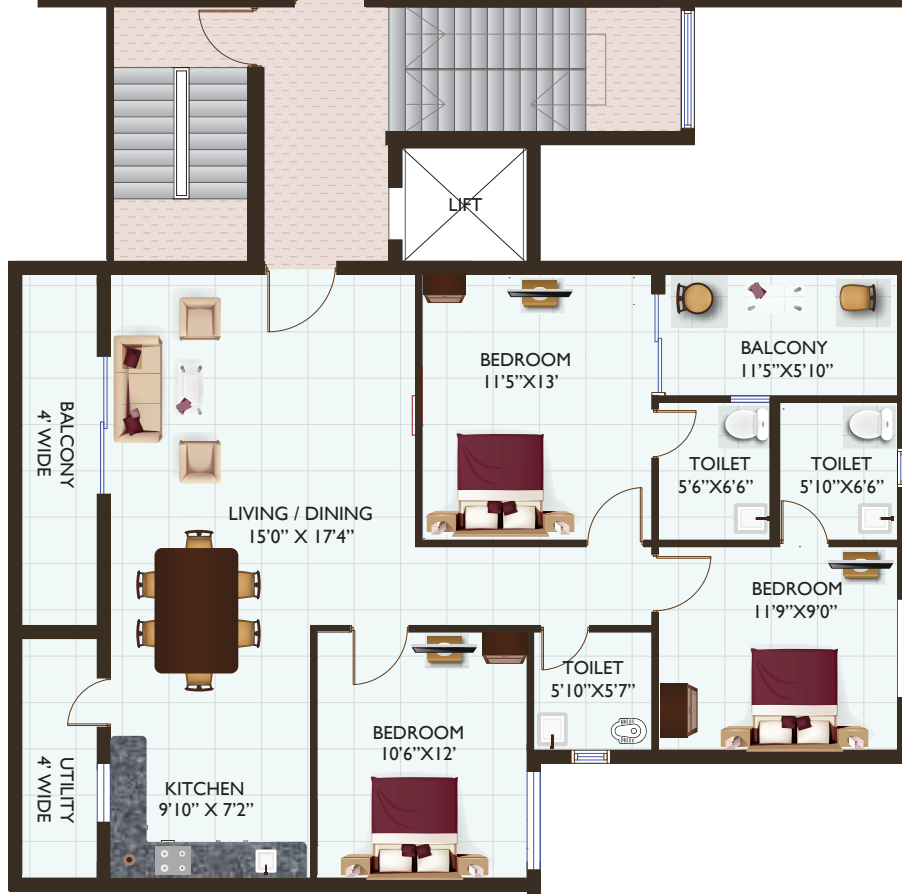
C 102
SBA 1465
CA 965

C 101
SBA 1200
CA 815



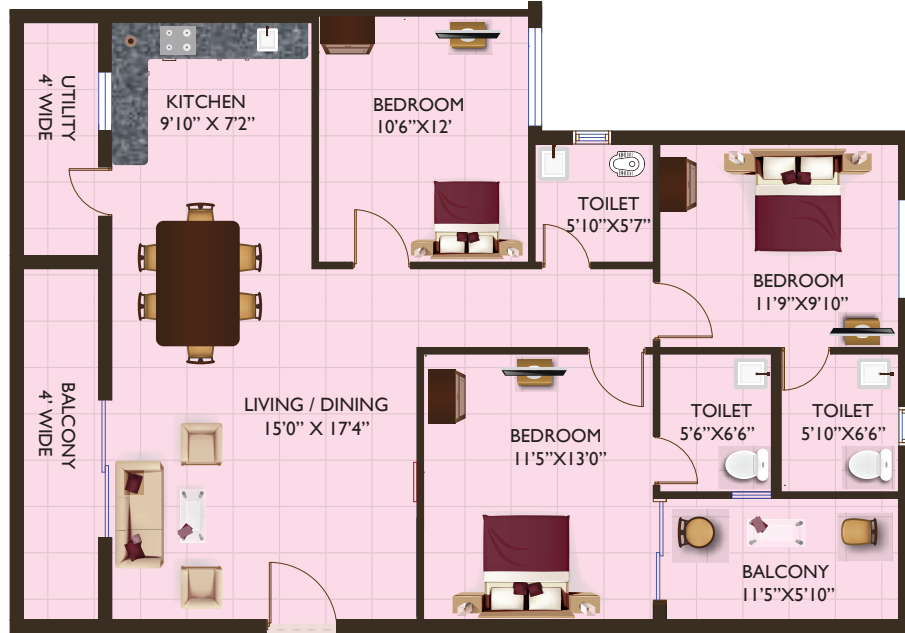
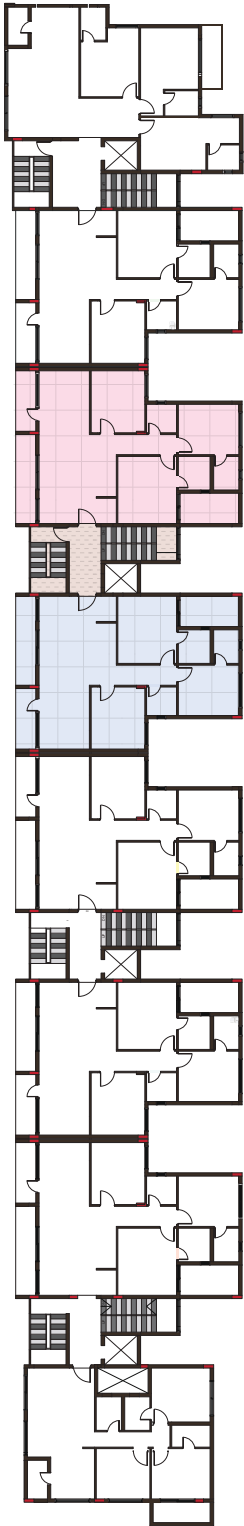


C 104
SBA - 1500
CA - 965

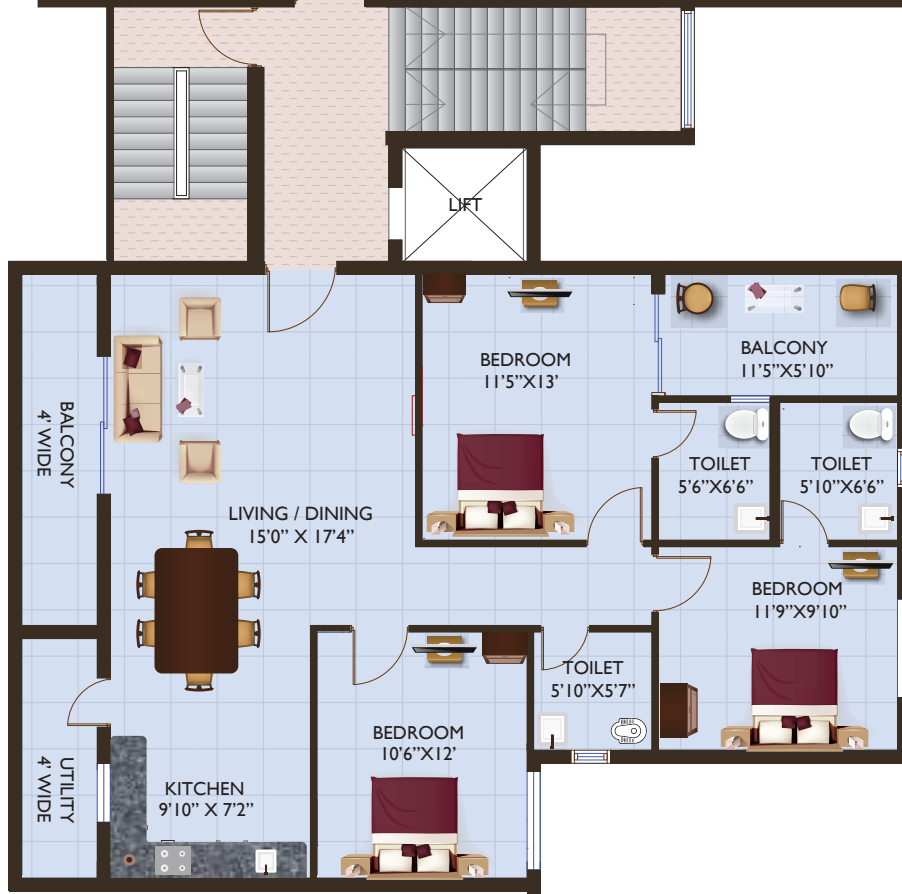


C 103
SBA - 1480
CA - 965



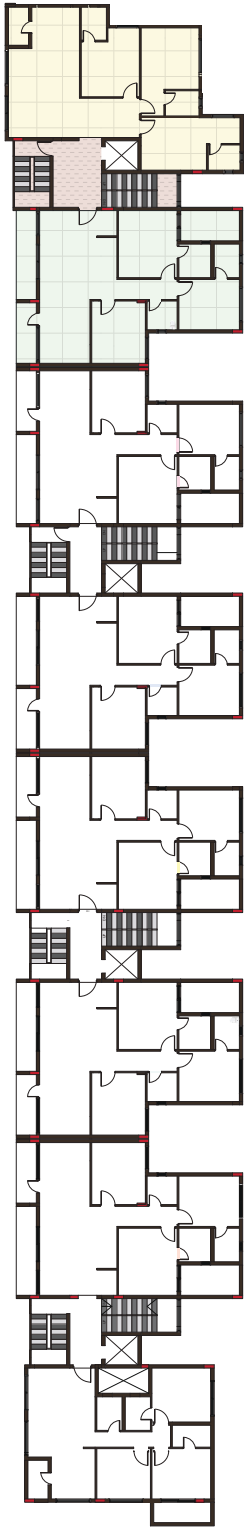


C 106
SBA - 1500
CA - 965



C 105
SBA - 1505
CA - 965

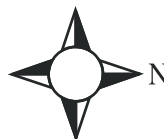


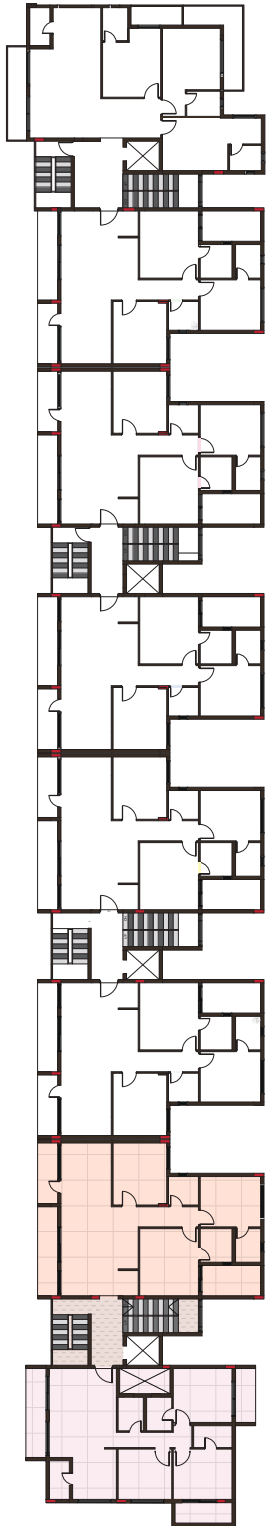


C 108
SBA - 1400
CA - 994



C 107
SBA - 1500
CA - 965

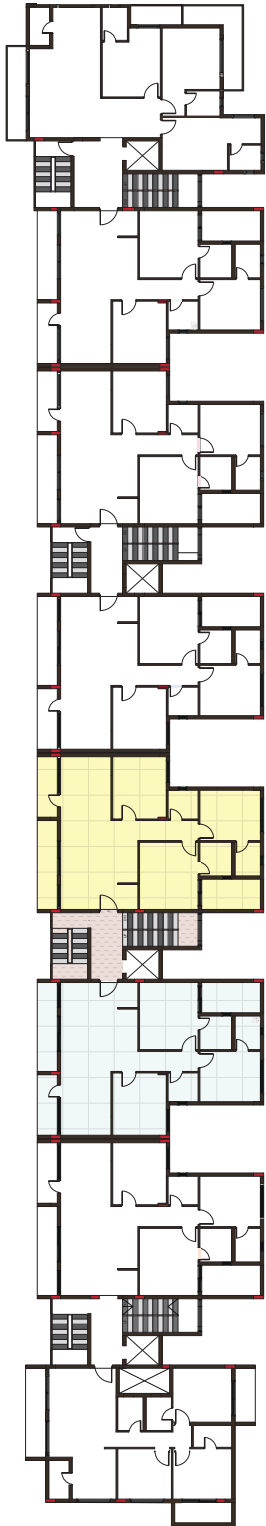




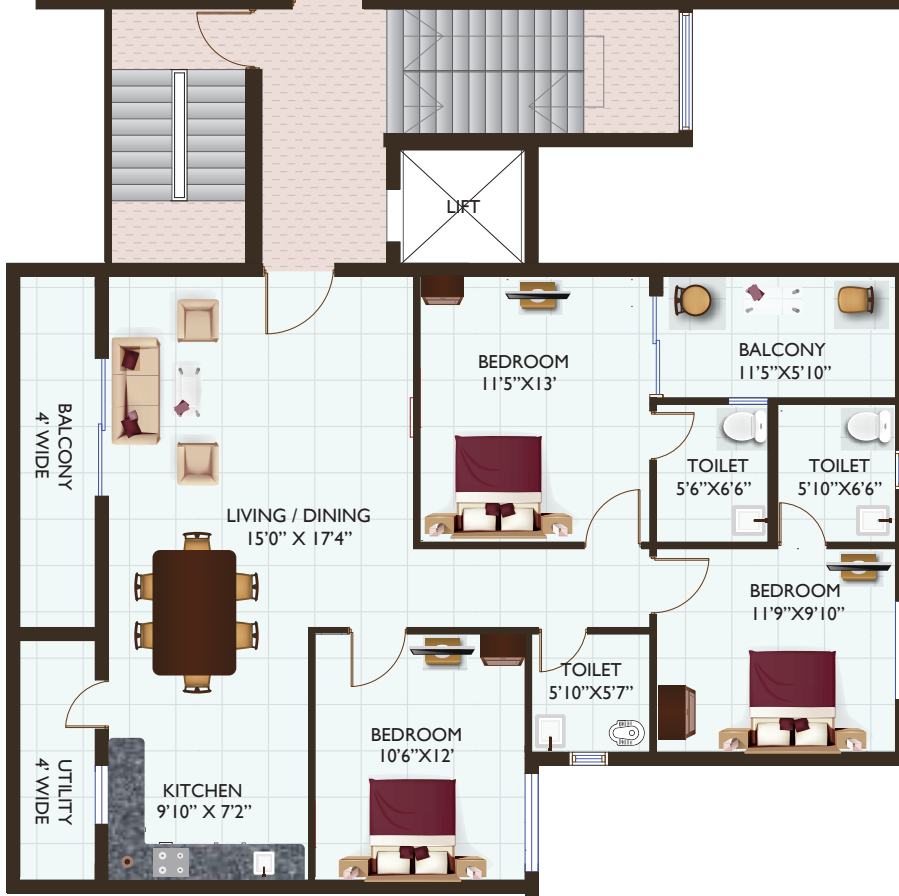
SBA 1500
 CA 965
 C 202
~~C 302~~
~~C 402~~
 C 502
 C 602

SBA 1340
 CA 815
 C 201
~~C 301~~
~~C 401~~
 C 501
 C 601



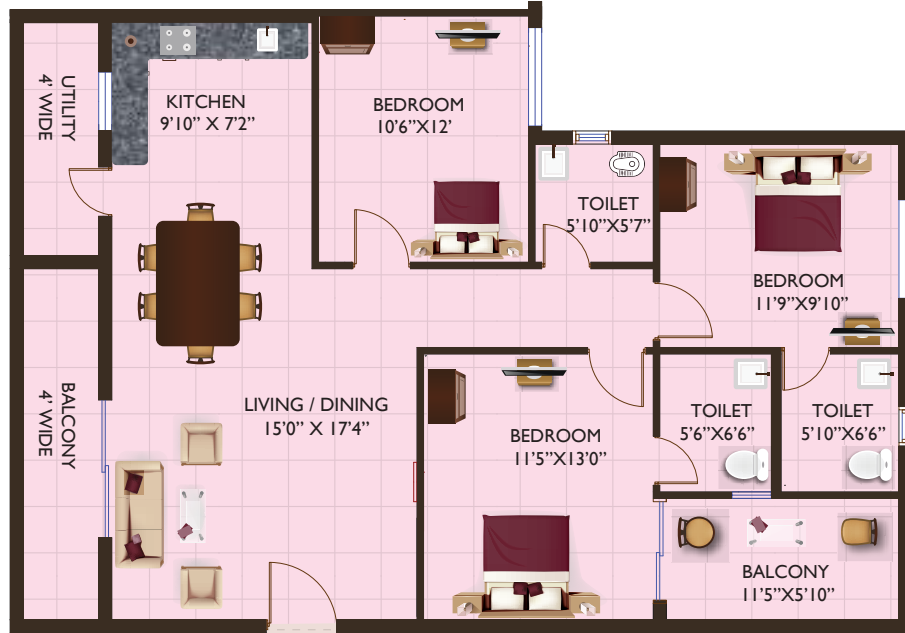
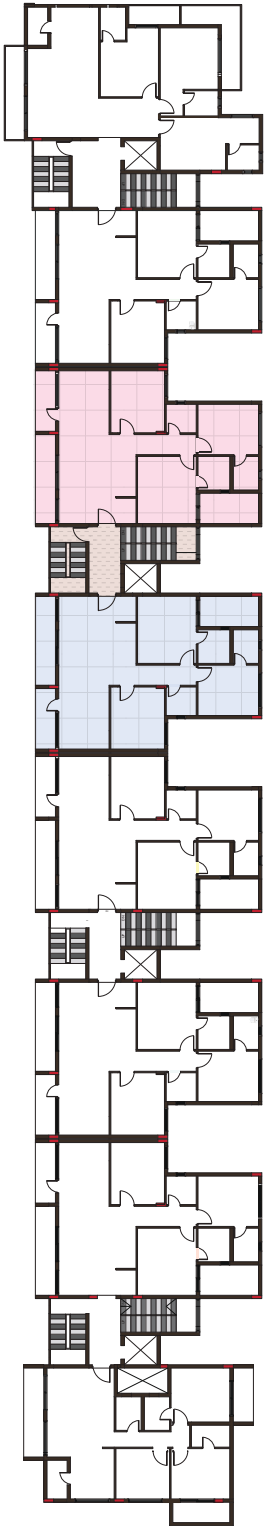


SBA 1500
 CA 965
 C 204
~~C 304~~
~~C 404~~
 C 504
 C 604



SBA 1505
 CA 965
 C 203
~~C 303~~
~~C 403~~
 C 503
 C 603



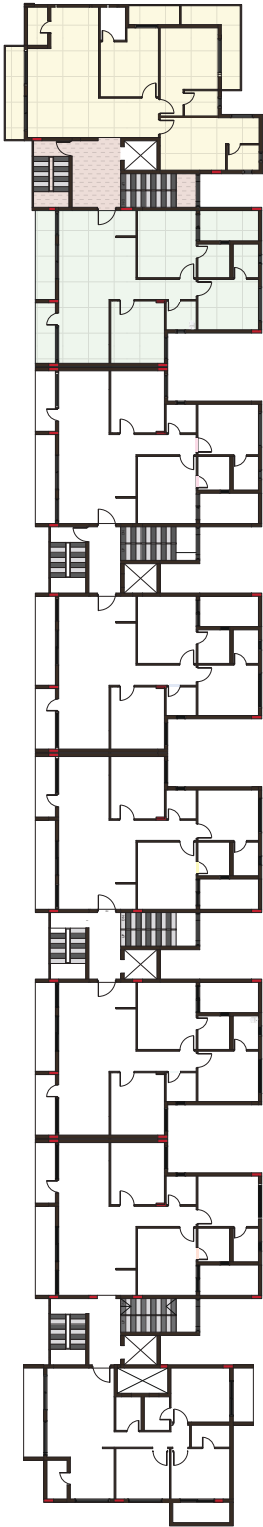


SBA 1500
 CA 965
 C 206
~~C 306~~
~~C 406~~
 C 506
 C 606



SBA 1505
 CA 965
 C 205
~~C 305~~
~~C 405~~
 C 505
 C 605





- SBA 1595
- CA 994
- C 208
- ~~C 308~~
- ~~C 408~~
- C 508
- C 608

- SBA 1500
- CA 965
- C 207
- ~~C 307~~
- ~~C 407~~
- C 507
- C 607





- Specifications are subject to changes without prior notice.
- Registration cost , GST & other Government charges will be extra.
- Layout, 3D View and structure subject to change at the instance for RMC/Structural Engineer or any other regulating authority.

Carpet area shall mean and include the carpet area as per definition provided by REAL ESTATE (Regulation and Development) ACT 2016 which includes internal walls, toilets etc but excludes exterior wall and balconies.



RAMESHWARAM INDUSTRIES

C/o Hindustan Tiles, 3rd Street, Shukla Colony, Hinoo Ranchi - 834 002

Ph.: 9431115330, 9431707949, 9431170753, 9324243746

• website : www.adharshilaproperties.com • E-mail : adharshilainfo@gmail.com