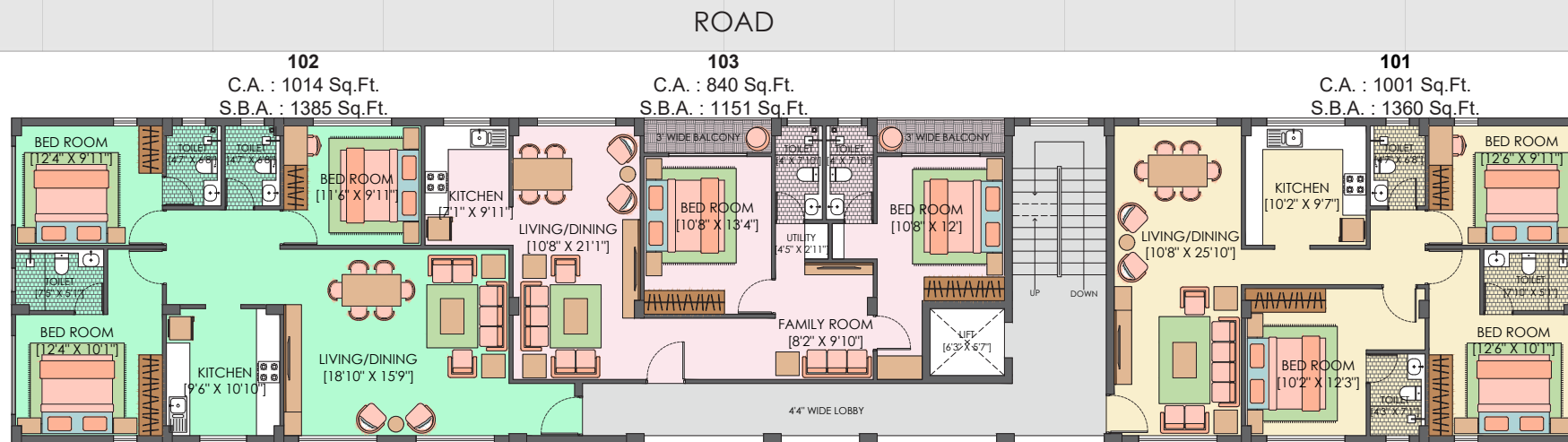
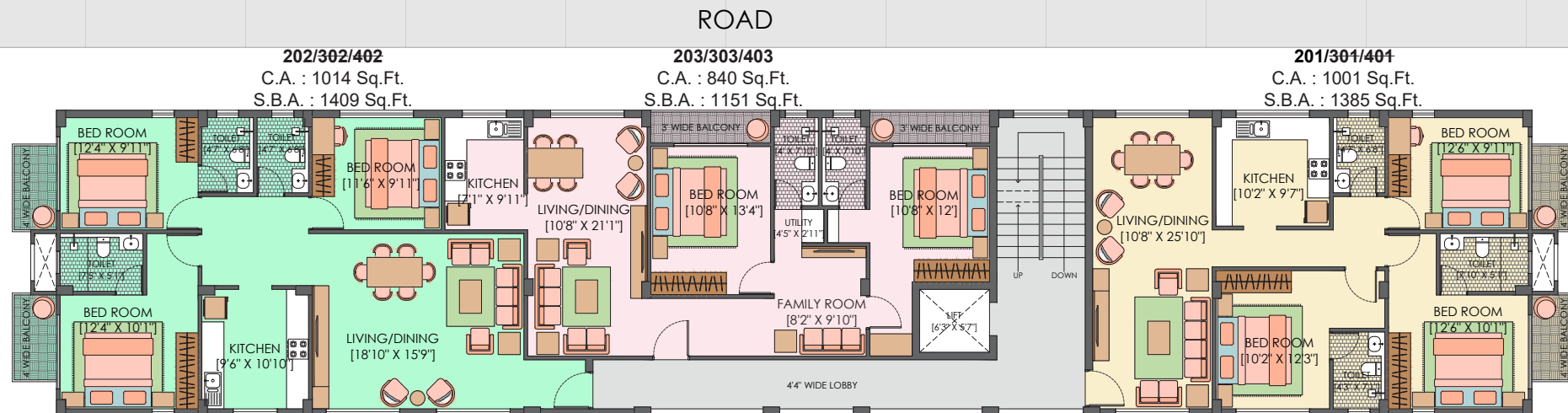




FIRST FLOOR PLAN



TYPICAL 2nd to 4th FLOOR PLAN



SPECIFICATIONS

Walls:

8"/6"/4" thick external & 3"/4" thick internal partition walls, all internal walls and ceiling will have plaster or Paris finish with a coat of cement primer and dry distemper over it.

Flooring:

Vitrified floor tiles in whole flat (Except Balcony and Toilets)

Anti-skid Ceramic Tiles for balcony and toilets.

Dado in ceramic tiles for toilets upto ceiling height.

Doors:

Wooden frame with flush/panel type shutters of wood. Ultra locking in main door and cylindrical lock in all bedrooms and toilet doors.

Windows:

Three track sliding aluminium windows with two track glazed and one track mosquito net.

Sanitary Fittings:

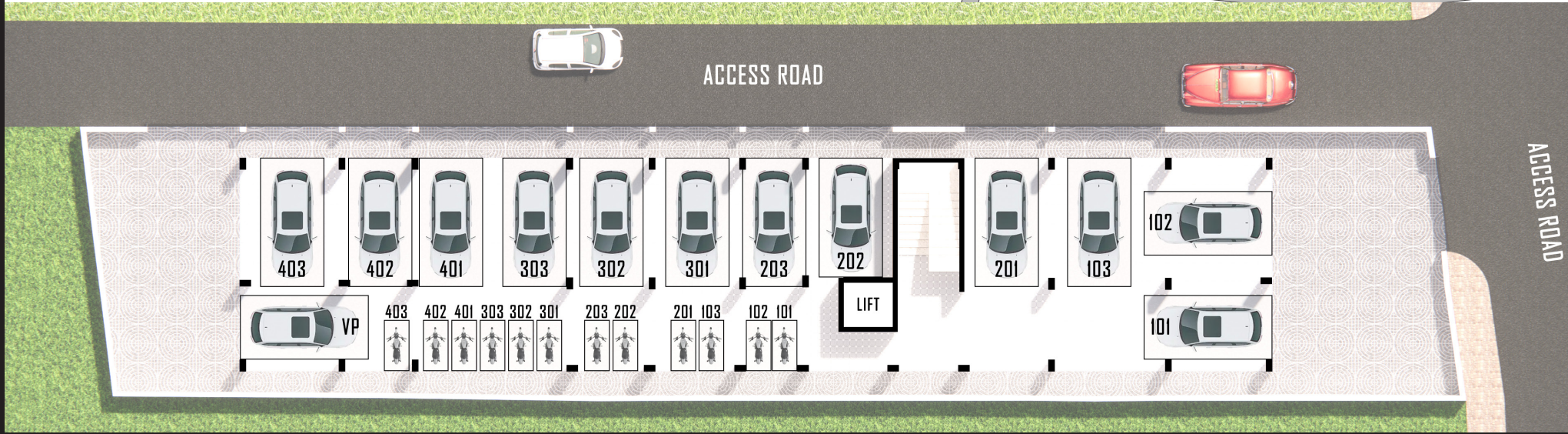
All C.P. or brass fittings of standard make. White glazed vitreous sanitaryware, cistern of white acrylic fibre glass. Hot and Cold provision in basin at Dining area with basin mixture.

Electricals:

Concealed copper wiring with standard make modular fittings and fixtures. Fan regulators, provision for AC point and T.V. & Telephone point in drawing room and all bedrooms and intercom facility shall be provided (A.C., Fan, Tubelights not provided)

PARKING FLOOR PLAN

SITE LOCATION



3D VIEW



ADHARSHILA STRUCTURES PVT. LTD.

C/o Hindustan Tiles, 3rd Street, Shukla Colony, Hinoo Ranchi - 834002

Phone : 9431170752, 9431707949, 9431170753

e-mail : adharshilainfo@gmail.com

website : www.adharshilaproperties.com