

PURNIMA

Kali Mandir Road, Burdwan Compound

SPECIFICATION

Foundation :

R.C.C. column and pedestal .

Structure :

R.C.C. coulumn/beams slabs.

Walls

8"/4" thick external & 3"/4" thick internal partition walls, all internal walls and ceiling will have plaster or Paris finish with a coat of cement primer and dry distemper over it.

Floors

Vitrified/ceramic floor tiles in whole flat (Except Toilets) (Make size and quality as per discretion of the builder)

Doors

Wooden frame with flush/panel type shutters of wood. Ultra locking in main door and cylindrical lock in all bedrooms and toilet doors.

Windows

Three track sliding aluminum windows with two track glazed and one track mosquito net provision.

Water Arrangement

Connection from deep tube well to overhead tank connected with electric pump.

Toilets

Flooring in ceramic tiles and dado in white ceramic tiles upto ceiling height. Corner basin with hot & cold mixture will be provided in both toilets.(Geysers not provided)

Sanitary Fittings

All C.P. or brass fittings of standard make. White glazed vitreous sanitaryware, cistern of white acrylic fibre glass.

Kitchen

All C.P. or brass fittings of standard make.

Electricals

Concealed copper wiring with standard make modular fittings and fixtures.
Fan regulators, provision for AC point and T.V. & Telephone point in Drawing Room and all Bedrooms and intercom facility shall be provided
(A.C., Fan, Tubelights not provided)

Parking

Floor Chequered Tiles.

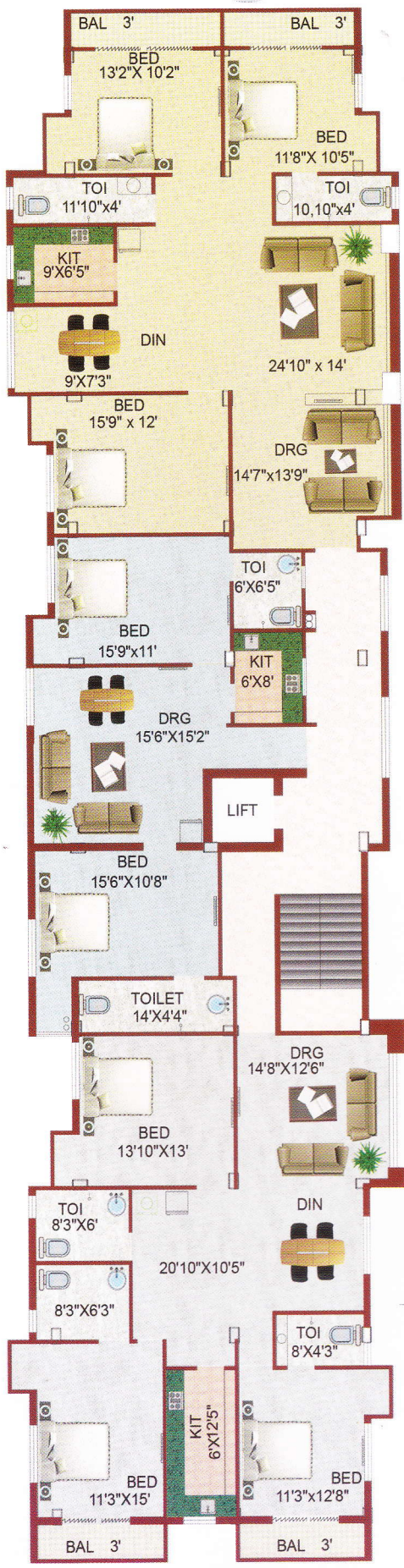


TYPICAL 1st to 4th FLOOR PLAN



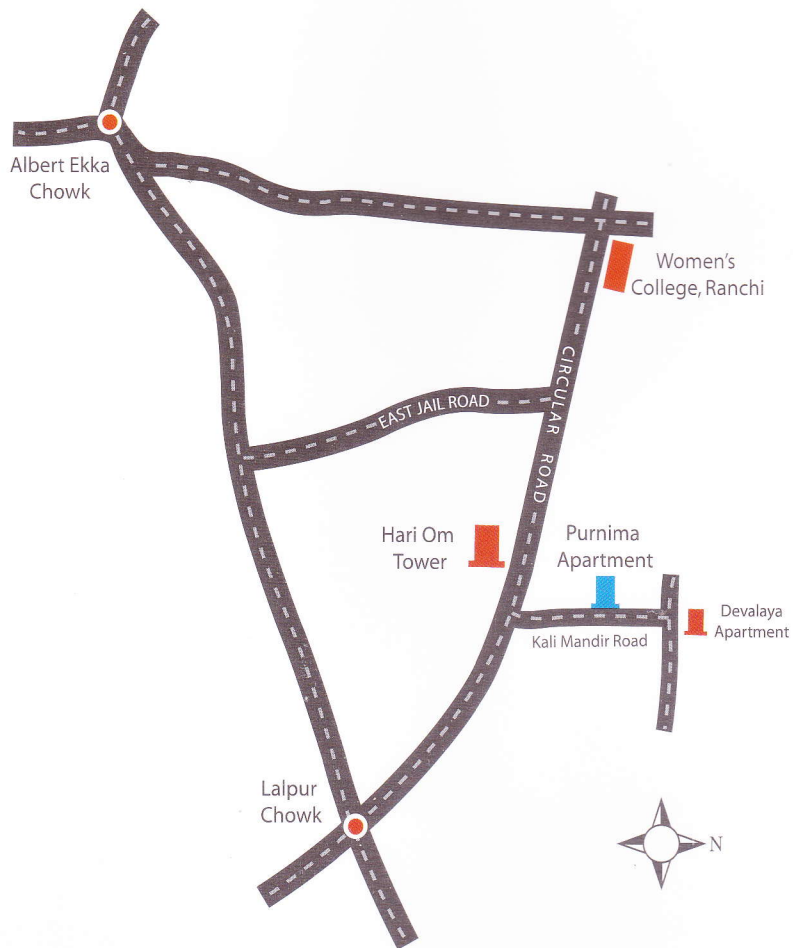
PURNIMA

1780 sq.ft. 403 303 203 103
1070 sq.ft. 402 302 202 102
1775 sq.ft. 401 301 201 101





LOCATION MAP



ADHARSHILA STRUCTURES PVT. LTD.

C/o Hindustan Tiles, 3rd Street, Shukla Colony

Hinoo Ranchi - 834 002

Ph. : 6000216/217, 2251471, 9431170287