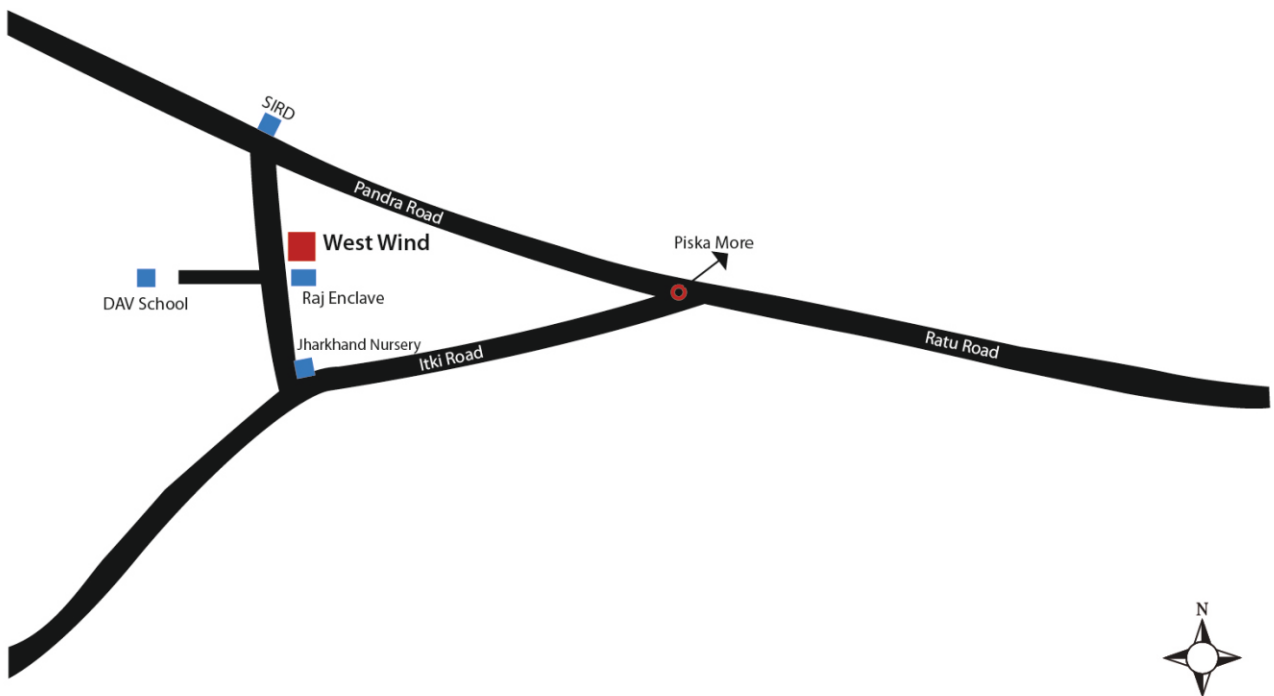
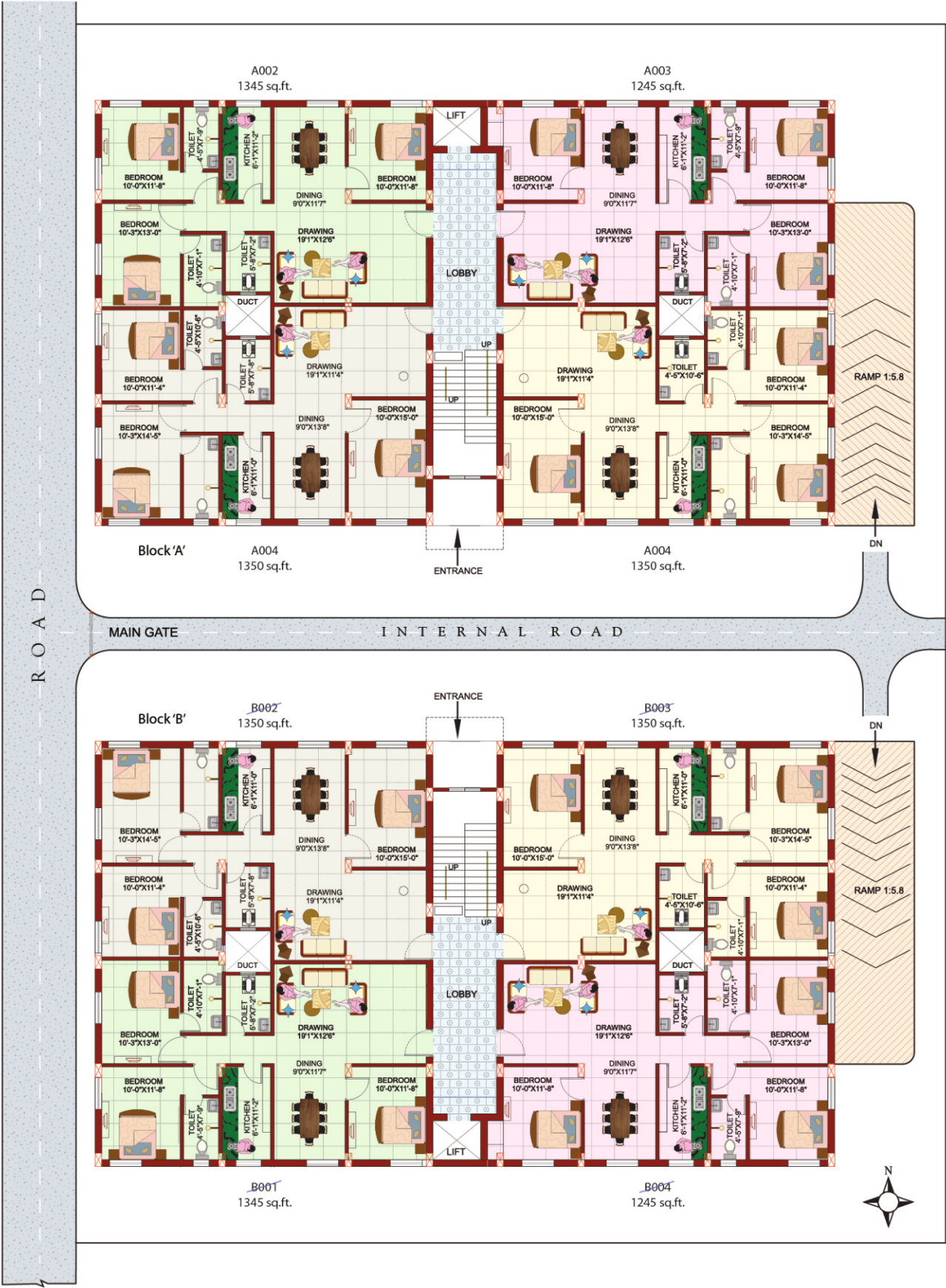




Location Map



Typical Floor Plan (GROUND FLOOR)





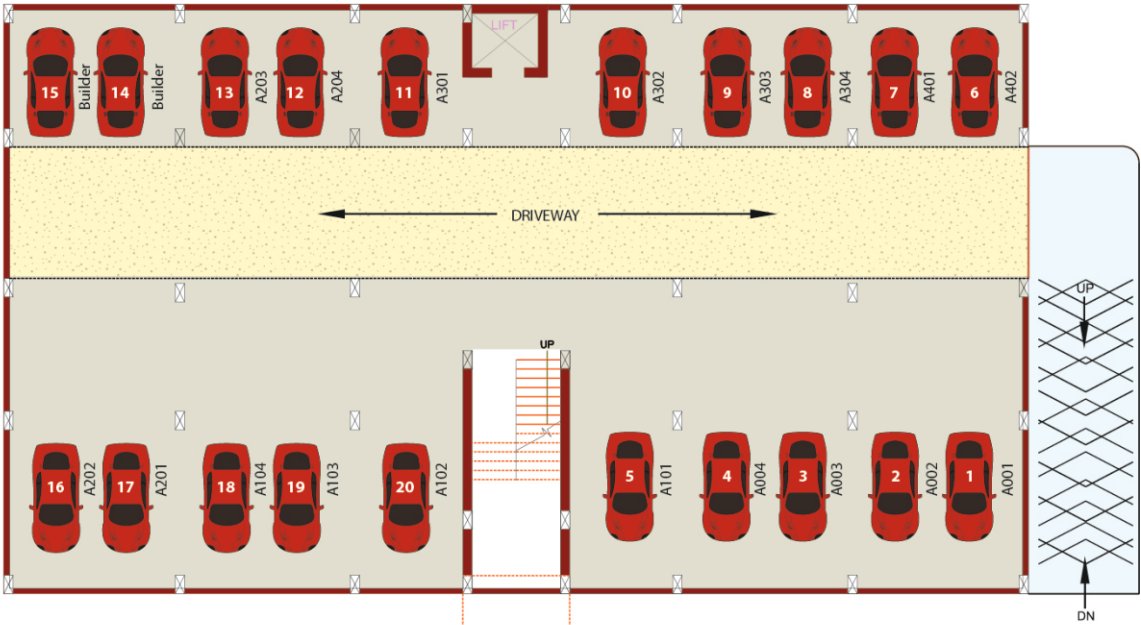


Typical Floor Plan (FORTH FLOOR)

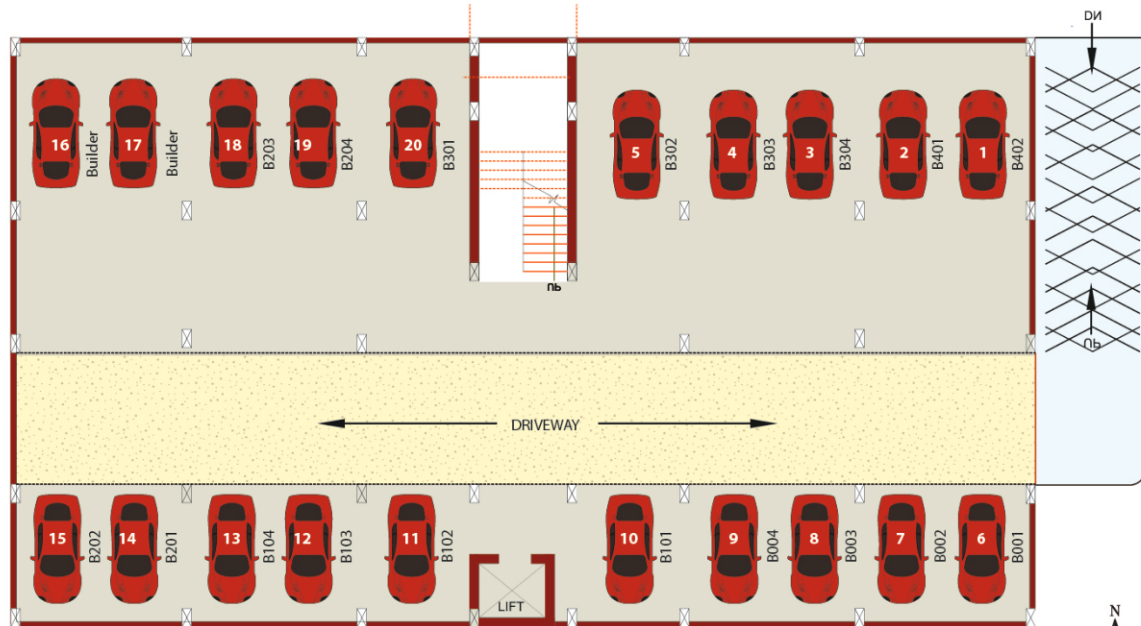




Typical Floor Plan (PARKING)



Block 'A'



Block 'B'



WEST WIND



## Specification



### Foundation :

R.C.C. Foundation with anti-termite treatment both in foundation and plinth

### Structure :

R.C.C. Column/beams slabs.

### Walls :

8"/4" thick external & 3"/4" thick internal partition walls, all internal walls and ceiling will have Plaster of Paris finish with a coat of cement primer and dry distemper over it.

### Floors :

Vitrified/ceramic floor tiles in whole flat ( Except Toilets) (Make size and quality as per discretion of the builder)

### Doors :

Steel/Wooden frame with flush/panel type shutters of wood . Ultra locking in main door and cylindrical lock in all bedrooms and toilet doors.

### Windows :

Three track sliding aluminum windows with two track glazed and one track mosquito net provision.

### Water Arrangement :

Connection from deep tube well to overhead tank connected with electric pump.

### Toilets :

Flooring in ceramic tiles and dado in white ceramic tiles upto ceiling height. Corner basin with hot & cold mixture will be provided in both toilets.(Geysers not provided)

### Sanitary Fittings :

All C.P. or brass fittings of standard make. White glazed vitreous, sanitaryware, cistern of white acrylic fiber glass. Hot and Cold provision in basin at Dining area with basin mixture. (Geysers not provided)

### Kitchen :

All C.P. or brass fittings of standard make. Hot and cold water provision. (Geysers not provided)

### Electricals :

Concealed copper wiring with standard make modular fittings and fixtures. Fan regulators, provision for AC point and T.V. Telephone point in Drawing room and all Bedrooms and intercom facility shall be provided  
(A.C., Fan, Tubelights not provided)

### Parking :

Floor Chequered Tiles.

## MODE OF PAYMENT

Initial Booking Rs. 5,00,000/-

Rest Amount as per Agreement

Flat No. \_\_\_\_\_

Flat Floor \_\_\_\_\_

Flat Direction \_\_\_\_\_

Flat Value \_\_\_\_\_

Rates valid one week from \_\_\_\_\_

## LOAN FACILITY AVAILABLE

Specification are subject to changes without prior notice. Registration cost and service tax will be extra. Layout, 3D View and structure subject to change at the instance for RRDA/RMC, Structural Engineer or any other Regulating Authority.